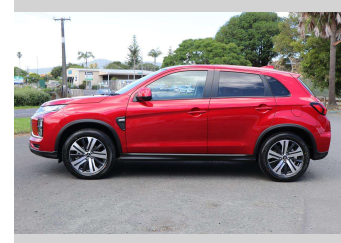
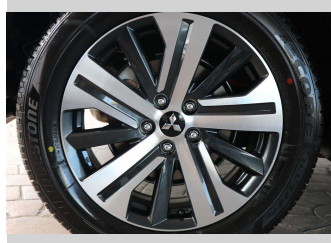
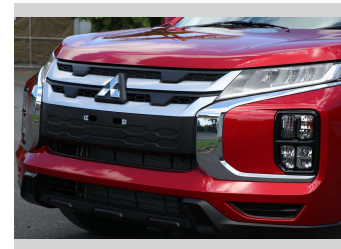
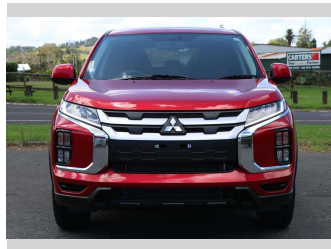


# 2025 Mitsubishi ASX LS 2.0P/CVT




**Purchase Price** **\$28,490**

Includes GST  
Excludes on-road costs of \$933.24

Finance may be available on this vehicle. Ask one of our friendly staff for more information.



Gain peace of mind with Mechanical Breakdown Insurance. **Ask us how.**



**Top features**

None Listed

Body Style  
**Station Wagon**

Odometer  
-

Engine  
**1998 cc**

Fuel Type  
**Petrol**


Transmission  
**CVT**

Wheels  
-

VIN  
**JMFXTGA2WRU018859**

Interior  
**Black**

Safety



Based on 2024 VSRR rating

Reg No.  
-

Ext Colour  
**Red Diamond**

History  
-

Seats  
-

CO2 Emissions  
**★★★★☆**  
**196 grams/km**

Energy Economy  
**★★☆☆☆**  
**Annual fuel cost of \$3,330**  
**8.5L per 100km**

Cost per year is an estimate based on petrol price of \$2.80 per litre and an average distance of 14000 km. Emissions and Energy Economy figures standardised to 3P WLTP.

**Stock ID: 501729**



Archibald Cars | Phone 09 408 1900 | Email sales@amotors.co.nz  
143 Commerce Street, Kaitaia, New Zealand  
www.archibaldcars.co.nz