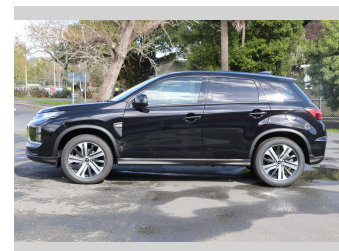
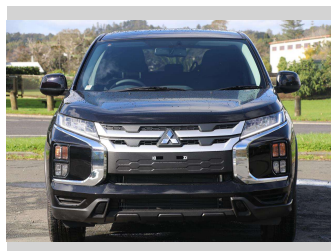
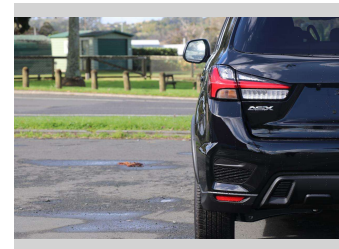
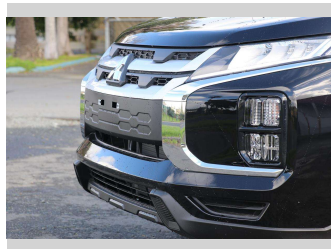



2025 Mitsubishi ASX LS 2.0P/CVT



Purchase Price **\$27,990**

Includes GST
Excludes on-road costs of \$933

Finance may be available on this vehicle. Ask one of our friendly staff for more information.



Gain peace of mind with Mechanical Breakdown Insurance. **Ask us how.**



Top features

None Listed

Body Style
5 door, Station Wagon

Odometer
-

Engine
1998 cc, Electronic Fuel

Fuel Type
Petrol


Transmission
CVT

Wheels
-

VIN
JMFXTGA2WRU008707

Interior
-

Safety



Based on 2023 VSRR rating

Reg No.
-

Ext Colour
Amethyst Black

History
-

Seats
5 seats

CO2 Emissions
★★★★☆

196 grams/km

Energy Economy
★★☆☆☆

Annual fuel cost of \$3,330
8.5L per 100km

Cost per year is an estimate based on petrol price of \$2.80 per litre and an average distance of 14000 km. Emissions and Energy Economy figures standardised to 3P WLTP.

Stock ID: 495361



Archibald Cars | Phone 09 408 1900 | Email sales@amotors.co.nz
143 Commerce Street, Kaitaia, New Zealand
www.archibaldcars.co.nz