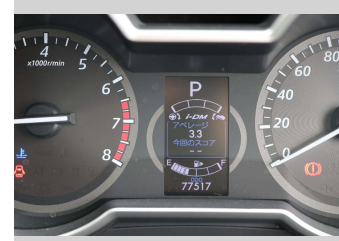
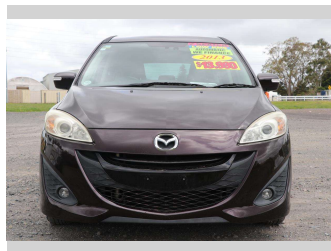


2013 Mazda Premacy




Purchase Price **\$13,990**
Includes GST, Registration & Licensing

Finance may be available on this vehicle. Ask one of our friendly staff for more information.



Gain peace of mind with Mechanical Breakdown Insurance. **Ask us how.**



Top features

- » ABS Brakes
- » Air Bag(s)
- » Air Conditioning
- » Alloys
- » Central Locking
- » Electric Mirrors
- » Electric Opening Doors
- » Electric Windows
- » I Stop
- » Keyless Operating Syst...
- » Remote Locking
- » Tinted Windows

Body Style
5 door, Station Wagon

Odometer
77,515 km

Engine
1997 cc, Electronic Fuel

Fuel Type
Petrol

Transmission
CVT

Wheels
-

VIN
7AT0C133X24110580

Interior
Black

Safety



Based on 2024 VSRR rating

Reg No.
QYD228

Ext Colour
Brown

History
Ex-Overseas

Seats
7 seats, Cloth

CO2 Emissions
★★★★☆
163 grams/km

Energy Economy
★★★★☆☆

**Annual fuel cost of \$2,740
7L per 100km**

Cost per year is an estimate based on petrol price of \$2.80 per litre and an average distance of 14000 km. Emissions and Energy Economy figures standardised to 3P WLTP.

Stock ID: 550992



Waipapa Autocourt | Phone 09 407 6430 | Email info@waipapacars.co.nz
2047 State Highway 10, Waipapa, Kerikeri 0295, New Zealand
www.waipapacars.co.nz