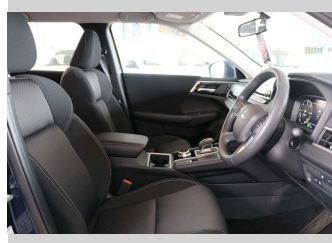
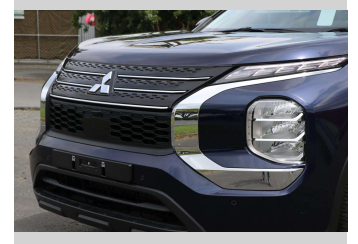
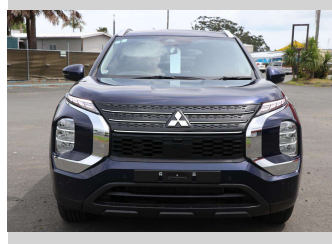



# 2025 Mitsubishi Outlander LS PHEV/4WD/AT




**Purchase Price** **\$51,990**

Includes GST  
Excludes on-road costs of \$1,390

Finance may be available on this vehicle. Ask one of our friendly staff for more information.



Gain peace of mind with Mechanical Breakdown Insurance. **Ask us how.**



**Top features**

None Listed

Body Style  
**5 door, Station Wagon**

Odometer  
**5 km**

Engine  
**2360 cc**

Fuel Type  
**PlugIn Petrol Hybrid**

Transmission  
**CVT**

Wheels  
-

VIN  
**JMFXDGN0WPZ002802**

Interior  
-

Safety



Based on 2022 ANCAP rating for 21+ models

Reg No.

-

Ext Colour  
**Atlantic Blue**

History

-

Seats  
**5 seats**

CO2 Emissions  
**★★★★☆**  
**38 grams/km**

Energy Economy  
**★★★★☆**

**Annual fuel cost not available**  
**1.6L per 100km**

Actual figures and cost per year will vary based on proportion of hybrid mode driving and battery charging schedule. Emissions and Energy Economy figures standardised to 3P WLTP.

**Stock ID: 475488**



Archibald Cars | Phone 09 408 1900 | Email sales@amotors.co.nz  
143 Commerce Street, Kaitaia, New Zealand  
www.archibaldcars.co.nz