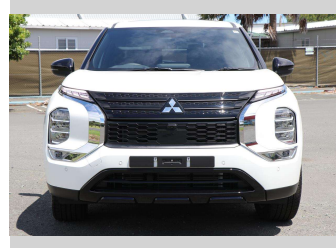



2025 Mitsubishi Outlander Sport 2.5P/2WD/CVT




Purchase Price **\$45,650**
Includes GST, Registration & Licensing

Finance may be available on this vehicle. Ask one of our friendly staff for more information.



Gain peace of mind with Mechanical Breakdown Insurance. **Ask us how.**



Top features
None Listed

Body Style
5 door, Station Wagon

Odometer
km

Engine
2488 cc, Electronic Fuel


Fuel Type
Petrol

Transmission
CVT, 2WD

Wheels
-

VIN
JMFXTGM4WRZ026556

Interior
Black

Safety

Based on 2022 ANCAP rating for 21+ models

Reg No.
RBQ671

Ext Colour
Cardrona

History
-

Seats
7 seats

CO2 Emissions
★ ★ ★ ★ ☆ ☆
194 grams/km

Energy Economy
★ ★ ☆ ☆ ☆ ☆
Annual fuel cost of \$3,370
8.6L per 100km

Cost per year is an estimate based on petrol price of \$2.80 per litre and an average distance of 14000 km. Emissions and Energy Economy figures standardised to 3P WLTP.

Stock ID: 505057



Archibald Cars | Phone 09 408 1900 | Email sales@amotors.co.nz
143 Commerce Street, Kaitaia, New Zealand
www.archibaldcars.co.nz