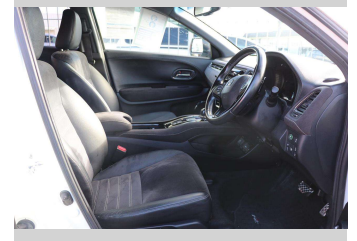
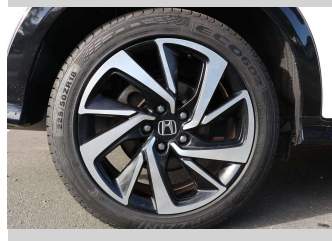
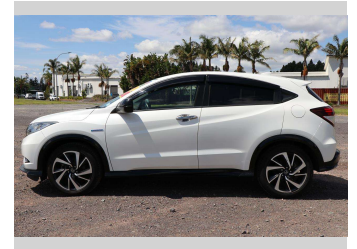


2016 Honda Vezel




Purchase Price **\$23,990**
Includes GST, Registration & Licensing

Finance may be available on this vehicle. Ask one of our friendly staff for more information.



Gain peace of mind with Mechanical Breakdown Insurance. **Ask us how.**



Top features

None Listed

Body Style
Station Wagon

Odometer
86,298 km

Engine
1496 cc, Hybrid

Fuel Type
Petrol


Transmission
CVT

Wheels
-

VIN
7AT08GDHX24206591

Interior
-

Safety



Based on 2024 VSRR rating

Reg No.
QUZ622

Ext Colour
White

History
-

Seats
5 seats

CO2 Emissions
★★★★☆
113 grams/km

Energy Economy
★★★★☆☆
Annual fuel cost of \$1,880
4.8L per 100km

Cost per year is an estimate based on petrol price of \$2.80 per litre and an average distance of 14000 km. Emissions and Energy Economy figures standardised to 3P WLTP.

Stock ID: 533744



Waipapa Autocourt | Phone 09 407 6430 | Email info@waipapacars.co.nz
2047 State Highway 10, Waipapa, Kerikeri 0295, New Zealand
www.waipapacars.co.nz